

Premises

DECEMBER 2008



Greg Laramie, architect, explains the CHPS process at a tour of the Ponaganset Middle School in North Scituate to AIA/CSI members at the R.I.D.E. Schools Tour – Part II on September 17, 2008. For more information on Greentools for Healthy Schools, visit the Collaborative for High Performance Schools at www.chps.net.

In this issue:

- 2 President Elect's Message
- 3 2008 Design Awards Gala
- 3 1914 AIAri Directory
- 4 Construction® Event Raises Awareness of Hunger in RI
- 5 RI Chapter of the US Green Building Council
- 6 AIAri Golf Tournament 2008 Recap
- 7 2008 Architectural Study
- 8 Member News
- 10 Rehab Code Training Seminars
- 11 AIAri COTE: Knowledge Sharing
- 12 Emerging Professionals Update
- 13 Recent AIAri Events
- 14 Calendar of Events



AIA Rhode Island
A Chapter of the American Institute of Architects

AIARI Board of Directors**President**

J. Michael Abbott, AIA
Newport Collaborative Architects
333 Westminster St., Providence, RI 02903
Tel: 401-272-2144
E-mail: jmabbott@ncarchitects.com

President-Elect

Gregory Spiess, AIA
Edwards and Kelcey
166 Valley St., Building 6M, Suite 101
Providence, RI 02909
Tel: 401-272-1969
E-mail: gspiess@ekmail.com

Vice President

Cyndi Gerlach, AIA
Robinson Green Beretta
50 Holden St., Providence, RI 02908
Tel: 401-272-0240
E-mail: cgerlach@rgb.net

Secretary

Melissa Hutchinson, AIA
Newport Collaborative Architects
38 Washington Square, Newport, RI 02840
Tel: 401-846-9583
E-mail: mhutchinson@ncarchitects.com

Treasurer

Derek Bradford, AIA, RIBA, ASLA
Bradford Associates
25 Creighton St., Providence, RI 02906
Tel: 401-521-6867
E-mail: bradfordassoc@earthlink.net

Directors

James Barnes, AIA
James Barnes Architects
14 Imperial Place, #201
Providence, RI 02903
Tel: 401-751-0520
E-mail: jimrisd@aol.com

Mary Brewster, AIA
Brewster Thornton Group, LLC
150 Chestnut St., Providence, RI 02903
Tel: 401-861-1600
E-mail: mail@brewsterthornton.com

Douglas Kallfelz, AIA
Donald Powers Architects
146 Union Street
Providence, RI 02903
Tel: 401-272-4724
E-mail:
Douglas@donaldpowersarchitects.com

Christine Malecki West, AIA
William L. Kite Architects, Inc.
166 Valley St., Bldg. 5, Providence, RI 02909
Tel: 401-272-0240
E-mail: cw@kitearchitects.com

Michael Warner, AIA
Michael Warner Architect
648 Elmwood Avenue
Providence, RI 02907
Tel: 401-461-6980
E-mail: mwarner@conversent.net

Associates Director

Kyle Bamrick, Assoc. AIA
William L. Kite Architects, Inc.
166 Valley St., Bldg. 5, Providence, RI 02909
Tel: 401-272-0240
E-mail: kb@kitearchitects.com

Past President

Mark Saccoccio, NCARB, AIA
Saccoccio & Assoc. Inc
1085 Park Ave., Cranston RI 02910
Tel: 401-942-7970
E-mail: mark@sa-architects.com

Ex-Officio

Stephen White, AIA
Roger Williams University
One Old Ferry Road
Bristol, RI 02809

President Elect's Message

*Greg Spiess*

On November 13 the AIARI Chapter held its Annual Meeting at the historical and distinguished Colony House at Washington Square in Newport. This important meeting saw the election of our new 2009 Officers and members of the Executive Committee who oversee the ever-growing agenda of events, continuing education, public services and professional camaraderie that make this institution the valuable resource it has become.

*Friedrich St. Florian*

In addition to the Annual Meeting agenda, the Chapter also honored **Friedrich St. Florian FAIA** on his election to the College of Fellows and in recognition of his considerable contributions to our Nation, State and the Profession to which he stands as an illustrious Architect and Scholar. Thank you to those who joined us for the acknowledgement and viewing of Friedrich St. Florian's Architecture.

The upcoming year looks to be more auspicious than usual as the economy is sure to affect the profession's business outlook. In addition, AIA National has new Contract Documents and BIM Integrated Practice/Project Delivery developments as well as ongoing initiatives in Code Unification, Sustainability and Internship Development, to name just a few. This is also a year when membership, which has been growing steadily, is a priority. We are welcoming our newly registered architects by paying for their local dues in their initial year as members and are reaching out to newer and smaller firms to get involved on our boards and committees, especially as our new headquarters, Windows on Architecture, 158 Washington Street, in Downtown Providence, has provided us a meeting and gallery space for weekly design salons, lunch seminars and exhibits convenient for the emerging studios and sole practitioners as well as the state's larger firms. We have been joining our colleagues at the Construction Specifications Institute events and look to co-sponsor more events and enjoy the collegial contacts with others in the product, engineering and related design fields. Our Emerging Professionals Group has established itself as one where design and construction-oriented persons tour construction sites, make new contacts and exchange ideas and opportunities in interdisciplinary settings. Given the economy's current downturn, the role of your local AIA chapter can be very effective in promoting employment opportunities, networking and even mentoring and camaraderie as we endure this storm.

AIARI is looking for new and motivated professionals, especially in smaller and growing firms, for several of its Committees. If interested, please contact me (greg.spiess@jacobs.com) to discuss the ongoing committees eager for volunteers on unique initiatives which we are spearheading in the region. These include the Committee on the Environment (COTE), The Architects and Engineers Emergency Response Task Force (The AEERTF), and proposed committees on Historic Resources and Rehabilitation Building Code Review. We look forward to your involvement, increased membership and spirited participation in our inter-connected profession.

Greg Spiess AIA LEED AP
President Elect AIA-ri

2008 Design Awards Gala



The 2008 Design Awards Gala will be held on Thursday, December 4, 2008 at the Squantum Club located at 947 Veterans Memorial Parkway in East Providence. Cocktails and hors d'oeuvres will be served in the Clubhouse at 6 p.m.. There

will be a cash bar. The awards presentation and dinner will be held immediately after in the Bakehouse at 7 p.m. Recommended dress ranges from "business attire" to "formal," whatever you feel comfortable in!

The jury advisor will be our own **Derek Bradford, AIA** and this year's jury will include: **Christopher Carley, AIA** of Carley Associates in Concord, NH
Karen Moore, AIA of Imai Keller Moore in Watertown, MA
Linda Pollak of Marpiello & Pollak in New York, NY
Anthony P. Schirripa, AIA, IIDA of Mancini Duffy Architecture Design in Stamford, CT
Jane Weinzapfel, AIA of Leers Weinzapfel Associates in Cambridge, MA

RSVP by November 21 to Jennifer Zolkos at (401) 272-6418 or email execdir@aia-ri.org. Please sure to include the names of all guests and a check payable to "AIA Rhode Island." The event is \$85/person or \$800 for a table of ten. Good luck to all those who have submitted their entries.

1914 AIARI Directory

This Fall the AIARI received a special gift from **Lynne Merrill-Francis of AIA-Michigan**. Lynne sent an original AIA Rhode Island Directory pamphlet from 1914. This directory lists 28 current members in addition to 3 non-professional members from 1914-1915. It also lists the Committees at that time which included: Admissions, Entertainment, Competitions, Public Information, Civic Improvements, Education and Lien Law. That's quite a few Committees for only 28 members!

Some members listed that you might recognize include author **Norman Morrison Isham** an expert on early New England architecture, preservationist and historian **John Hutchins Cady** and **Charles E. Carpenter** of Stone, Carpenter and Willson.

The 1914 Directory will be framed and displayed at the AIA window for viewing. If others happen upon other historical documents from AIARI past, please forward to AIARI Executive Director, Jen Zolkos. The Executive Committee would like to start an archive of these historic materials.



AIARI Corporate Affiliates as of May 2008

A. W. Hastings & Co.
Aaron Usher Photography
Abernathy Lighting Design, Inc.
Aerotek
Ameriprise Financial Services, Inc.
Beals and Thomas, Inc.
Beyond the Woods
Chapman Construction / Design
Cobalt Industries
Communications Systems, Inc.
Dimeo Construction
DiPrete Engineering Associates, Inc.
E. W. Burman, Inc.
Earleylight
Engineering Design Services, inc.
Evelyn Audet Lighting Design
Fine Furnishings Show
Gaskell Associates
GZA GeoEnvironmental, Inc.
Heritage Restoration, Inc.
Humphrey's Window and Door Design Gallery
International Masonry Institute
Jacobs Edwards & Kelcey Corp.
Jacques Whitford Co., Inc.
Jutras Woodworking
Lightolier
Maloney & Company, LLC
New England Concrete Masonry Assoc.
New England Construction
Northeast Engineer and Consultants, Inc.
O. Ahlberg & Sons
Odeh Engineers
Office Direct/Cannava Design, Ltd.
Omni-Lite, Inc.
Osterman Propane
Pare Corporation
RI Blueprint
Robert Saglio Audio Video Design
Saint John Stone
Service Point USA
Tower Construction Corporation
TRAC Builders, Inc.
Trinkle Design
Vanasse Hangen Brustlin, Inc.
Vantage Builders, Inc.
W.F. Shea & Company, Inc.
Warren Jagger Photography
WB Mason Company, Inc.

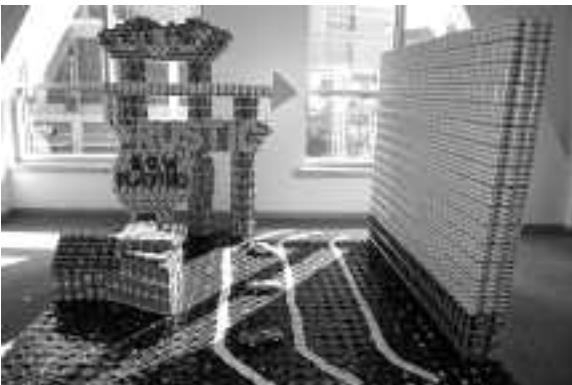
Canstruction® Event Raises Awareness of Hunger in Rhode Island



Extinguish Hunger



Stay-Puft Marshmallow Can



Drive-In to End Hunger



Lighting a Fire to End Hunger

AIARI and RISGL – Young Constructors Forum came together again this year for the second Canstruction® event to create CANTastic sculptures from CANS! We hope you all had the opportunity to visit the Providence Place mall between September 13 and 27 to view the impressive works that captured the attention of all who passed through the Mall-Westin connector corridor. This year, six teams joined forces to design, engineer and construct the themed sculptures using only cans. The event was judged and awards were presented at the Gala held on Wednesday, September 24, 2008 at the mall.

Unofficial accounts have the total food weight at 17,400 pounds and over 20,000 cans. When dismantled, all cans, estimated at \$30,000 in value, were donated to the Rhode Island Community Food Bank for their efforts in eliminating hunger in Rhode Island.

Cleverly conceived concepts and executions made the judges' job difficult in choosing the: Best Meal, Structural Integrity, Best Use of Labels, Jurors' Favorite and Honorable Mention. Jurors included: **Daniel Baudouin**, Providence Foundation; **George Born**, Executive Director, Providence Preservation Society; **Thomas Deller**, Director, City of Providence Planning Department; **Pat Germani**, Territory Manager, Herman Miller; **Craig Gorris**, General Manager, Providence Place; **Eileen Hayes**, Executive Director, Amos House; **John Maeda**, President, Rhode Island School of Design; **Maria G. Smith**, Second Vice President, Rhode Island Chapter of the Construction Specifications Institute; and **Andrew Thurlow**, Professor, Roger Williams University School of Architecture, Art and Historic Preservation.

The participating teams and awards granted were:

"Extinguish Hunger" - Saccoccio & Associates
Two Awards: "Jurors' Favorite" and "Best Meal"

"Stay-Puft Marshmallow Can" - Lerner, Ladds + Bartels/
Odeh Engineers/Shawmut
Award: "Structural Integrity"

"Drive-In to End Hunger" - Dimeo Construction Company
Award: "Best Use of Labels"

"Lighting a Fire to End Hunger" - Donald Powers Architects
Award: "Honorable Mention"

"Who Can Recycle?" – Newport Collaborative Architects

"The Providence Skyline – Casting a Shadow On Hunger" - Robinson Green Beretta/Gilbane Building Co.

Support for the event included many who provided financial and in-kind services to ensure its success. Major sponsors for the Canstruction® RI exhibit gala included **AIARI**, **RIAGC** and **Roger Williams University**. Organizing partners were the **Rhode Island Community Food Bank**, **Providence, Place**, **Service Point** and **Sandy Connor Art Direction**. Additional Sponsors included **Herman Miller**, **The Rhode Island Chapter of the Construction Specifications Institute**, **Synet, Inc.**, **Cardi's Furniture**, **Creative Office Environments**, **Inkwell Communications**, **Whole Foods Market**, **Stop & Shop**, **WEEI – Providence**, **Sterling Moving and Storage** and **White Glove Catering**.

Our own **R. Drayton Fair**, **AIA**, **LEED-AP**, a partner with **Lerner, Ladds + Bartels**, and **RIAGC Young Constructor Michael Busam** co-chaired the event with help from committee members **Joshua Brandt**, **Michael Cerio**, **Jackie Falla**, **Jim Chiappone**, **John Grayco**, **Sandy Connor**, **Andrew Swift**, **Bruce Ciuomo** and **Michael Warner, AIA**. Of course, **Mayor David N. Cicilline** presided over the awards ceremony again this year.

Drayton was quoted as saying: "We are very grateful to the sponsors who have contributed so much to help underwrite our gala awards festivities as well as to our distinguished panel of judges and partners who have contributed a great deal of their time. This year we were able to contribute more of the proceeds to the Food Bank because of the generosity of more sponsors than last year and because we have incorporated as a 501(c)(3) organization."

Michael Busam, Vice President of the **RIAGC Young Constructors Forum** and a project engineer at **Gilbane Building Co.** said, "We hope that even more design professionals and construction firms will team up to create additional innovative sculptures for the next competition. We think it is important to donate as much as possible to the Food Bank and to try to inspire others to help end hunger in Rhode Island."

All of the top award recipients will have their entries submitted to the **National Canstruction®** competition for further judging to be held at the upcoming **2009 AIA National Convention** in **San Francisco**. As we await that outcome, let's begin to think how our **3rd Canstruction®**

event planned for **Spring 2010** can be even more successful. This is an excellent opportunity for our membership to participate in a great course and gain invaluable exposure to the public. Additional information can be viewed at the **Canstruction®** website: www.canstruction.org.

This year was the twelfth year of the **National Canstruction® Sculpture** competition which is organized by the **Society of Design Administration** as a joint public service activity. It is now international in scope with teams of design and construction professionals in dozens of cities across the United States as well as **Canada**, **Columbia**, **Australia** and **New Zealand**.



Who Can Recycle?



The Providence Skyline



Providence Mayor David N. Cicilline



Committee members Sandy Connor (left) and Michael Warner, AIA (far right) attend the Gala.

2008 Architectural Study



In September, DiCicco, Gulman & Company LLP, a CPA and business consulting firm, released its 2008

Architectural Study. The study incorporates five years of financial data from twenty-six prominent firms in the Boston marketplace. The annual study analyzes and evaluates operational performance metrics, then identifies emerging trends in the Boston market. A public version of this study, which does not disclose individual firm names, is available for purchase on-line in PDF format at www.dgccpa.com

Survey results show that 2007 was a record-breaking year for the architectural industry. Utilization rates, project profitability, and hourly wage rates hit all-time highs. Indicators of emerging trends were:

- 56% of architecture firms are doing business internationally
- 44% of architecture firms are utilizing building information modeling (BIM) technology
- 30% of architecture firms operate multiple offices
- 25% outsource design work

The study examines financial and operational statistics that allows firms to benchmark their performance

against the average of firms in the survey. Management can use it as a tool to identify strengths and weaknesses, and set realistic financial and operational goals.

According to Dave Sullivan, CPA and partner in charge of the A&E practice within the firm, "This year's study was a little different, in that, we had to take into account the profound economic factors that will have an impact on this industry well into 2009. We discuss the importance of globalization, out-sourcing, and technology, all areas firms must pay close attention to in order to stay competitive. However, the study remains an in-depth examination of financial and operational strategies across the board."

With over twenty years of experience, Sullivan and his team have worked closely with leading architectural firms on matters such as financial and tax planning, mergers and acquisitions, due diligence services, ownership transition, and more. "Regardless of their size or area of specialization, architectural firms share important underlying operational characteristics," explains Sullivan. "Our clients represent architectural firms in the top 2% of the Boston marketplace, they are truly market leaders. This financial data effectively represents the general A&E industry in this area and is an important reference for all growing firms."



WE DELIVER

- * Floor Plans
- * Ceiling Plans
- * Roof Plans
- * Exterior Elevations
- * Interior Elevations
- * Building/Wall Sections
- * Mechanical/Equipment Layouts

Existing Architectural Exterior Elevation



We deliver the most accurate architectural existing conditions documentation. Our highly trained staff along with the latest technology makes us the industry leader in architectural existing conditions and as-built surveys.

LOWER YOUR PROJECT COSTS: Our fee for services is lower than your in-house costs and our delivery time is faster!

REDUCE DEMANDS ON YOUR STAFF: Call in per project. We can have a team on site right away to collect field information and start drawing!

ACCURATE, RELIABLE DRAWINGS: Our highly trained staff measures hundreds of buildings per year. Using the latest laser technology, we are the experts in creating existing conditions drawings.

REFERENCES WITH FREE QUOTE: We work for many architectural firms throughout the northeast and will be happy to provide references, sample drawings and a free quote on your next project!

Contact: Kurt J. Yeghian
(617) 247-9161 * kurt@existingconditions.com
Existing Conditions Surveys, Inc.
396 Columbus Avenue #334 * Boston, MA 02116

DiCicco, Gulman & Company LLP (DGC) is a CPA and business consulting firm specializing in the accounting and financial matters of closely held companies and high net worth individuals. Practice areas include A&E, commercial real estate, commercial business, high net worth individuals, and litigation support. As an independent member firm of Moore Stephens North America, DGC has access to a global network of technical expertise and best practices, which result in elevated performance standards. For more information please visit www.dgccpa.com or call 781-937-5320.

AIARI Golf Tournament 2008 Recap

On August 18, AIARI hosted its 10th Annual Golf Tournament at the Wannamoisett Golf Club in Rumford, RI. The participants couldn't have asked for better weather. Close to \$25,000 was raised for the AIARI Forum which provides scholarships to students studying in Rhode Island and RI students studying out of state at an accredited architectural program. Over 100 people attended the event, enjoying a beautiful day of golf followed by an evening dinner. Due to the generosity of the participants, AIARI was able to give out scholarships to ten worthy students. Seven of the recipients attended the post-tournament dinner with their family members to receive recognition of their hard work and dedication to their studies. Master of Ceremonies, **Mark Saccocio**, Chair of the AIARI Golf Committee, called on **Dean Stephen White** of Roger Williams University to ask each student up to the front to be recognized for their achievements.

Special thanks to **D.F. Pray General Contractors** for their capital sponsorship, and to **Dimeo Construction** and **Gilbane Construction** for their Arch sponsorship of the event. Thank you to all who donated money, time and energy to help make this event such a huge success!

Scholarship Winners

Alexander Parulis
Patrick Congdon
Nicholas Griffin
Lauren Homer
Meridith McCarthy
Kaitlyn Chapin
Jessica Weisner
Rachel Hampton
Kostika Spaho
Dan Nguyen



Golf Foursome Winners

Low Gross: Joseph Penney, Tom Moses, Paul Hartley, David Taglianetti
Low Net: Mark Hashway, Jeff Cook, Jeff Saletin, Rob Kermes
Low Net 2nd place: Ken Demers, Bob Bolton, Gene Oakland, Phil Leffert
Scramble Format winners: Dan Dileonardo, Steve Karen, Bruce Ignacial, Ray Keulgh



Member News

Birth Announcement



The AIAri congratulates Secretary, **Melissa R. Hutchinson, AIA** of Newport Collaborative Architects and her husband Tim Hutchinson who announced the birth of their first child on July 13, a baby girl named Leah Mae. Mom and baby are healthy and happy.

Jamestown Town Hall Wins AIA New England Merit Award for Design Excellence

The new Jamestown Town Hall, designed

by Burgin Lambert Architects, Newport, which recently



won an Honor award from the Rhode Island chapter of the American Institute of Architects and a Gold design award from Rhode Island Monthly



magazine, won a Merit Award in the 2008 AIA New Design Awards program in Portland Maine on October 4. "The jury applauded the vision of the architect to pare the historic building back to the original and move it to make room for the addition. There is a restraint in the addition that the jury felt not many architects could manage."



The firm also recently received a merit award for design from Builder Magazine for the renovation of the Watch Hill Yacht Club. A

Jamestown house, also done by the firm, was featured in the latest Fine Homebuilding Houses of the Year issue.

Durkee, Brown, Viveiros & Werenfels Architects Receives National Trust for Historic Preservation Honor Award for Washington Mills No. 1 in Lawrence, MA

The National Trust for Historic Preservation presented Washington Mills Building No. 1 in Lawrence, MA its prestigious National Preservation Honor Award during its 2008 National Preservation Conference in Tulsa, OK last week.

The development/design team, including DBVW Architects Principal Michael Viveiros, AIA, was one of 21 national award winners honored by the National Trust for Historic Preservation.



Lawrence, Massachusetts, 25 miles north of Boston, is home to a core of massive yet inactive historic mills that recall its industrial heritage. Thanks to the partnership between non-profit, historic preservation firm Architectural Heritage Foundation and the Banc of America Community Development Corporation, one mill is again buzzing with activity. The partnership helped spearhead the city's first major housing



development in over 20 years, transforming the Washington Mills Building No. 1 into loft-style rental apartments providing both affordable and market-rate housing. The project has brought new life and the promise of spin-off development to the region, suggesting that better days lie ahead for Lawrence and surrounding mill communities.

"In a region dotted with historic mills, Washington Mills stands out—not only for the quality of its recent renovation but also for the impact of its rebirth on the town of Lawrence," says Richard Moe, president of the National Trust for Historic Preservation. "This project has demonstrated in remarkable fashion how historic preservation can be a real catalyst for downtown revitalization."

Built in the 1886, Washington Mills Building No. 1 is a key building in the North Canal National Historic District. It is also a part of the Reviviendo Gateway Overlay Zoning District, which allows for residential use in the former industrial corridor. Washington Mills was deteriorating and almost completely vacant when it was renovated with funding from public and private sources, including state and federal tax credits. The \$40 million, 17-month redevelopment transformed the 240,000-square-foot building. The rehabbed mill now provides 155 units of mixed-income housing, employing design features that showcase the building's industrial character. Ranging in size from 625 to 1,700 square feet, the lofts' architectural highlights

include 14-foot-high ceilings, nine-foot arched windows, exposed brick walls and a new 2-story entrance lobby featuring massive stone and brick foundation walls that have been excavated and modified to create the main wall of the building entrance.

“This is a true honor for an architect and his team,” says Michael Viveiros, AIA, “when the National Trust for Historic Preservation selects your mill rehabilitation project from dozens of other mill rehabilitations from around the country for its ‘quality’ and ‘impact,’ it is very satisfying. It proves that the extra attention to design detail and the perseverance to have these elements executed correctly really does add tangible value to a project – and a community.”

Co-nominees honored for Washington Mills Building’s Honor Award are: Architectural Heritage Foundation, Inc., Banc of America Community Development Corporation and Durkee Brown Viveiros & Werenfels Architects.

Durkee, Brown, Viveiros & Werenfels Architects Announces Five Senior Staff Promotions

Durkee, Brown, Viveiros & Werenfels Architects has announced five promotions, including naming two Senior Associates and three Associates within the 28-person, Providence-based architectural firm. With four DBVW Principals, Senior Associates contribute to the firm’s strategic management decisions, and serve as Project Managers leading teams for several of DBVW’s most complex projects. The naming of three new Associates recognizes emerging leadership in three key areas of specialization within DBVW’s office: Interior Design, Historic Preservation and Marketing/Business Development.

Sean Redfern, AIA, LEED AP - Senior Associate. Since joining DBVW in 2000, Sean has been the Project Manager for projects throughout Rhode Island and Massachusetts, such as the conversion of a historic bank building into the Pell Chafee Performance Center; rehabilitation of mill complexes into mixed-use buildings at Pearl Street Lofts and Hamilton Canal Lofts; the expansion of the Gamm Theater within the Pawtucket, RI Armory; and multiple renovations on Brown University’s campus. Sean is currently serving as Project Manager for the conversion of a historic industrial building



in Lowell, MA into corporate offices for Nobis Engineering, designed to achieve LEED Silver Certification. He is a graduate of The University of Pennsylvania and Northeastern University.

Virginia Branch, AIA - Senior Associate. In her 7 years at DBVW, Virginia has served as the Project Manager for several affordable housing and neighborhood revitalization projects, including the conversion of the historic Dreyfus Building into affordable artists’ housing in downtown Providence; creation of new multi-family infill affordable housing in South Providence; and the conversion of a former biscuit factory into affordable housing in North Adams, MA. Virginia is currently working on the conversion of another historic building in downtown Providence to affordable artists’ live/work studios and retail space. She is a member of the Providence Historic District Commission, and a graduate of Clemson University and the University of Arizona.



Rebecca McGeorge, LEED AP, Assoc. IIDA – Associate.



Rebecca heads DBVW’s growing Interior Design Department, and has designed corporate interiors for Item New Product Development, RIEDC, and New Horizons Learning Centers. Rebecca’s previous experience at Holabird & Root in Chicago includes the interior design of several institutional and cultural facilities, such as renovations at the Chicago Cultural Center. She is currently working on the interior conversion of Providence’s historic RI Medical Society Building into LEED certified corporate offices for Moran Shipping Agencies, and converting a historic former hospital building into state offices for RI’s Dept. of Human Services and Allied Operations. Rebecca is the Director of Providence’s IIDA Chapter and holds a B.S. in Interior Design from Indiana University.

Cecelia Hallahan, AIA, LEED AP - Associate. As a historic preservation specialist, Cecelia has served as Project Manager for several multi-phased restoration projects including St. George’s School Chapel in Middletown, RI; the Tabernacle, a wrought-iron structure on Martha’s Vineyard; and the William Watts Sherman House at Salve Regina University in Newport, RI. Cecelia has a special interest in masonry restoration and



Member News continued...

has been responsible for the survey of a number of large-scale mill complexes in Rhode Island and Massachusetts. Cecelia also has experience compiling historic structures studies, building history reports, and Historic Tax Credit applications. She holds a B.A. in Architecture from Syracuse University.

Emily Hall - Associate. Emily is the Director of Marketing and Business Development and has been with DBVW since 2001. She directed the firm's recent rebranding initiative, which won a regional SMPS award for best corporate identity. Emily has worked to develop DBVW's marketing strategy to sustain and grow core markets while helping to expand their client base geographically throughout New England. Emily holds a B.A. from Colorado College and a master's degree in Industrial Design from RISD.



Save the Date - Rehab Code Training Seminars

In December the RI State Building Code Commissioner and the RI State Fire Marshal will be hosting two Rehab Code Training seminars. The two dates are **December 1, 2008** and **December 15, 2008**. The events will be held at the headquarters of Fidelity Investments in Smithfield, RI from 8:30 a.m. to 4:00 p.m. The program is mandatory for some building officials and open to all architects and engineers **FREE** of charge. These seminars will offer CEU credits for HSW. Please R.S.V.P. to Janine at the Commissioner's Office (401)222-3033 or to Jen Zolkos, Executive Director of the AIAri, execdir@aia-ri.org. You may also email Robert Leach, AIA at rleach@tmo.blackberry.net for additional info.

Relationship building.

Our success is based on staying true to our core values – quality, honesty and hard work. Our business is based on our clients' trust and our commitment to maintaining the highest ethical standards in the industry. For more information, visit our Web site, www.vb-inc.com, or call John Connor at (781) 895-3270.

VANTAGE
BUILDERS, INC.

COMMERCIAL CONSTRUCTION



Featured Project: Wellesley Information Services, Dedham, MA
View more projects at www.vb-inc.com.



Knowledge Sharing

The theme of the past few months has been knowledge sharing. First, little ole' AIARI was invited to participate in a roundtable discussion on chapter COTEs at this year's AIA New England Regional Conference. Thirty plus attendees gathered to hear representatives from RI, MA, ME and CT discuss their efforts, successes and secrets to success. Successes shared by AIARI COTE include:

- Continued partnership with the Apeiron Institute for Sustainable Living
- Construction Waste Management Seminar and continuing dialogue with RIDEM regarding C&D in Rhode Island
- Congratulatory letters to Providence, Pawtucket and Warwick mayors for signing onto the 2030 Challenge at the U.S. Conference of Mayors in 2006 (with follow-up meeting with the mayor of Warwick)
- Sustainable Landscapes and Digging Deep Geothermal salon series events.

Common lessons shared/learned shared by the chapters were:

- We are not alone when it comes to the struggles of a volunteer army
- Better utilize the resources available by AIA National
- Membership continuing education is viewed as a primary responsibility of chapter COTEs.

Second, AIARI COTE hosted LEED Lessons Learned, an event in collaboration with the Apeiron Institute for Sustainable Living to both showcase and learn from Rhode Island's first three LEED Certified projects. Close to forty attendees gathered at 17 Gordon Avenue to

enjoy pizza, beer and wine while taking in presentations from project teams representing; The Rhode Island College Residence Hall (LEED Certified), URI Dining Commons (LEED Silver), and 17 Gordon Avenue Business Incubator (LEED Silver). While projects varied in size, type and approach, Lessons Learned were amazingly similar:

- Establish project goals and scope at the beginning
- Commissioning is well worth the time & money
- The USGBC will audit 6 credits

AIARI COTE is always looking for new and energetic participants. All are welcome as membership is not limited to members of the AIA or to the architectural profession. AIARI COTE meets at the AIARI Window on Architecture, 158 Washington Street, from 5:30 p.m. - 7:00 p.m. on the first Thursday of every month and welcomes all who are interested in sustainability of our built environment and leaving the world better than how we found it. Our agenda for 2009 represents the focus and interests of our members and includes:

- Networking and collaboration with affiliate "green" organizations in Rhode Island
- "The Green Summit"
- Continued dialogue with RIDEM regarding C&D in Rhode Island
- Continuing "Green" Education (Sustainability CEUs) Air & Vapor Barrier Technology Salon Series Grants & "Green" Incentives in Rhode Island Alternative & Renewable Energy Options
- Collaborate with RI University Architecture Programs

For more information and resources, please visit our website by navigating to the Committees section of the new AIARI website at www.aia-ri.org.

Sincerely,
Christopher Armstrong, Assoc. AIA, LEED AP
Chair, AIARI COTE



Emerging Professionals Committee Update

The EP Committee has been busy the past few months and I would say that we're not done yet. First off we had the second installment of our Construction Tour Series and it was a great success. This time around, the group toured the Aquidneck Mill in Newport, a project by Newport Collaborative Architects. Among those who attended were young professionals, students, and working architects. I can say that seeing young people interested in architecture coming out and experiencing a construction site to be most satisfying. The young professionals are now out numbering the professionals in attendance by 3 to 1, good stuff!

In late October, we hosted the latest installment of the Emerging Architects Forum at the RISD Museum of Art's Chace Center in Providence. The title of the Forum was Defining [Place] in Profession - a discussion of regionalism. The event addressed the aspect of place juxtaposed with profession as emerging professionals and young architects make decisions that lead them down the path of their architectural career. The decision of where to practice and to question why, is a very important step one makes as they graduate and start internships. So how do they react to the place they've chosen? Is it all about work, or is there more invested on the personal side of the decision and how do you practice accordingly?

The Forum panel was comprised of a diverse mix of architects, practitioners, and educators, each coming to the panel with their own story of locating themselves and most importantly, their definition of place. Panelist included: **Mary Brewster**, AIA, Brewster Thornton Group Architects, **Virginia Hesse**, Rhode Island Historical Preservation and Heritage Commission, **Joseph Kennard**, Joseph Kennard Architects, **Harry Lowd**, Office dA, **Maia Small**, Thurlow Small Architecture

EP Construction Tour of IYRS in Newport



The Moderator of the event was **Gary Graham**, FAIA of Graham/Meus Architects, and associate professor at Roger Williams University, School of Architecture and Historic Preservation. Thanks to the panelists and moderator for animating the topic and questions with their own insight and experience.

Another great function of the Forum is the recognition and celebration of the newly licensed architects in Rhode Island. The State Licensing Board honored the following architects:

Michael E. Chieffalo	Crystal Bradwin Harris
Manual Cordero-Alvarado	Jason Christopher Iacobucci
Michael J. DeMatteo	Kyle William Robinson
Kristina Diane Gelnett	John Paul Ryan
Julia Ann Gerald	Nathan Tuttle
Aimee Goodwin Lombardo	

Congratulations to everyone on their achievement.

Also I would like to thank Roger Williams University, The Rhode Island School of Design, Service Point, RISD Caterers, The RISD Museum of Art and the Chace Center for all of their support. And finally the Emerging Professionals Committee themselves, great job!

As for the rest of the year, the committee is focusing on finalizing events for 2009, including more construction tours, social outings, and raising questions that focus on the road ahead for the emerging professional.

So stay tuned.

James M Evrard, Associate AIA
Chair, Emerging Professionals Committee

IDP Forum panelists



Recent AIARI Events

On September 10, the AIARI's Salon Series continued with the presentation of "Digging Deeper: Geothermal" at the AIA Window. Mike Zimmerman of Allied Consulting Engineering Services, Inc. spoke about his experience on some local projects using geothermal heating and cooling. Special thanks to **Christine Malecki West, AIA** for her continued efforts in bringing these Salon Series seminars to our members. For more information on these Geothermal projects, please visit www.alliedconsulting.net

On October 10, the AIARI hosted a six-hour Fire Sprinkler Seminar in conjunction with the National Fire Sprinkler Association. The event was held at the Rhode Island School of Design, BEB Architecture Building. This seminar offered attendees 6 Continuing Education Units in Health Safety and Welfare. Roughly 14 architects were in attendance to see speakers Mitch Campbell of the National NFSA and Tim Travers of the New England NFSA. Special thanks to **Wil Yoder, AIA, PE** who helped pull this event together.

On October 21, COTE of Rhode Island hosted a LEED "Lessons Learned" Seminar at the Aperion Institute for Sustainable Living in Providence. The seminar reviewed three local Rhode Island LEED projects:

- University of Rhode Island Dining Commons by Vision 3 Architects (LEED Silver)
- Rhode Island College Residence Hall by RobinsonGreenBeretta (LEED Certified)
- 17 Gordon Avenue Business Incubator by Architectural Resources, Inc. (LEED Silver)

For more information on the Aperion Institute, please visit their website at www.aperion.org

Each of these AIARI events offered CEU credits for attendees. For a list of other upcoming events that also offer CEU's, please visit the AIARI Calendar of Events at www.aia-ri.org

Photos provided by Greg Spiess, AIA



Salon Series: Geothermal - Digging Deeper



NFSA Fire Sprinkler Seminar



LEED "Lessons Learned" Seminar



AIARI, P.O. Box 9325, Providence, RI 02904
Phone 401-272-6418
www.aia-ri.org

PRSR STD
US POSTAGE
PAID
PROVIDENCE, RI
PERMIT NO. 843

AIA Rhode Island 2008 CALENDAR OF EVENTS

Nov. 13 AIARI Annual Meeting, Colony House, Newport

Dec. 1 Rehab Code Training Seminar – Part I

Dec. 4 AIARI Awards Gala, Squantum Club, East Providence

Dec. 15 Rehab Code Training Seminar – Part II

Go to www.aia-ri.org to get more info on the AIARI Events Calendar

February 2009 Premises deadline:

Friday, January 30, 2009.

Please send Member News to:

Melissa Hutchinson, AIA, Premises Editor,
at mhutchinson@ncarchitects.com